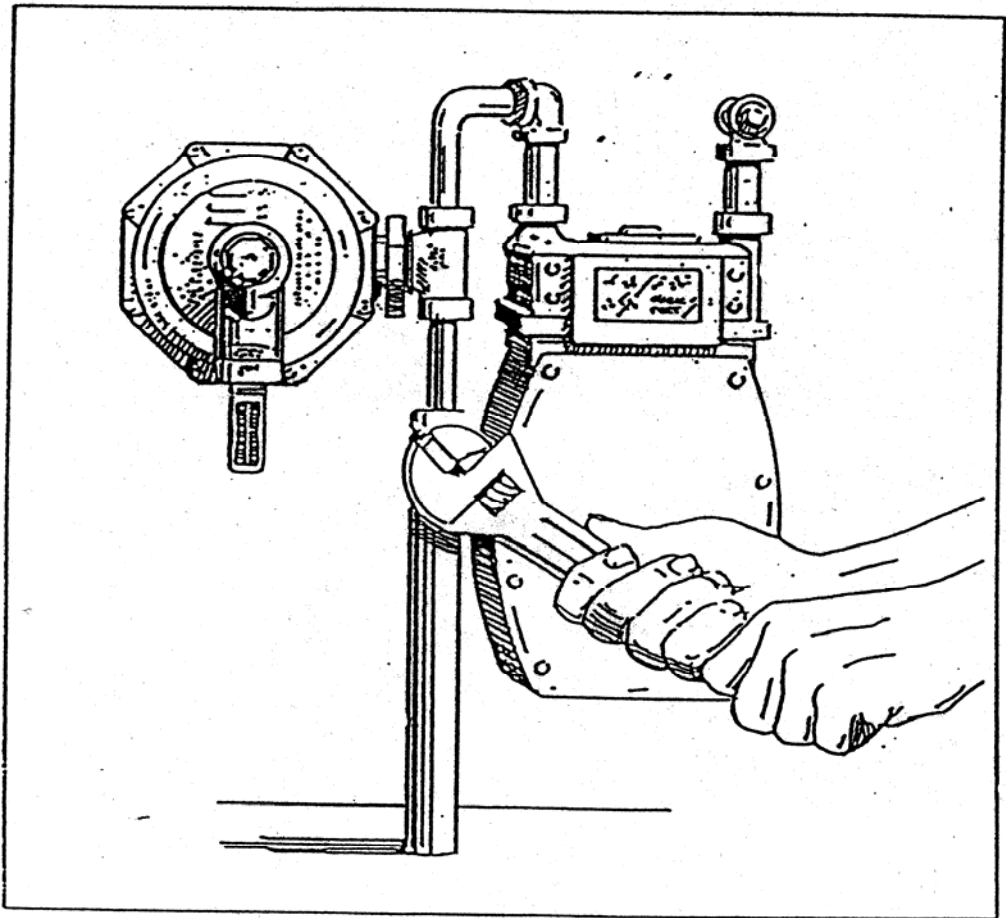
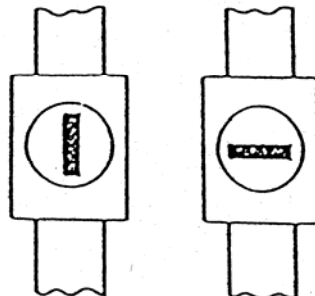


# HOW TO SHUT OFF GAS IN AN EMERGENCY

The main shut-off valve is located on the inlet pipe next to your gas meter. Using a wrench or some other suitable tool, give the valve a quarter turn in either direction so that it is crosswise to the pipe. (See drawing.) Gas must be turned on again by a PG&E gas serviceman. Please call your local PG&E business office for service.

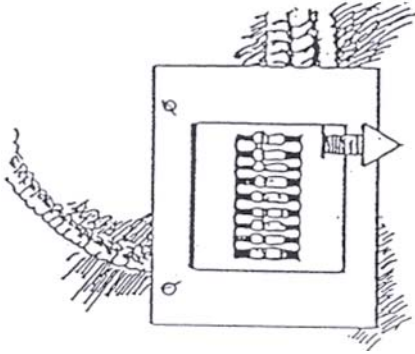


OPEN      CLOSED

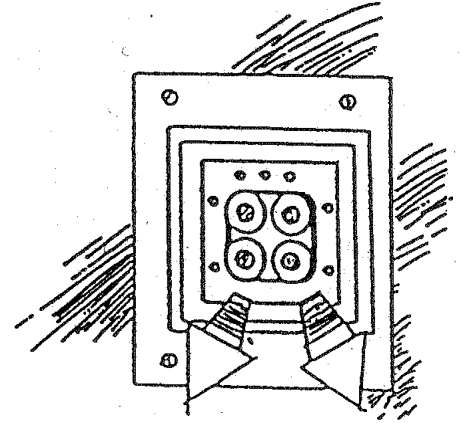


## How to shut off electricity in a emergency

After a major disaster, shut off the electricity and check for damage to the wiring. Sparks from electrical switches could ignite leaking gas and cause an explosion. You probably have one of these two types of electrical breakers in your home:



**Circuit Breaker  
Cartridge Fuses**



**Pull-out**

---

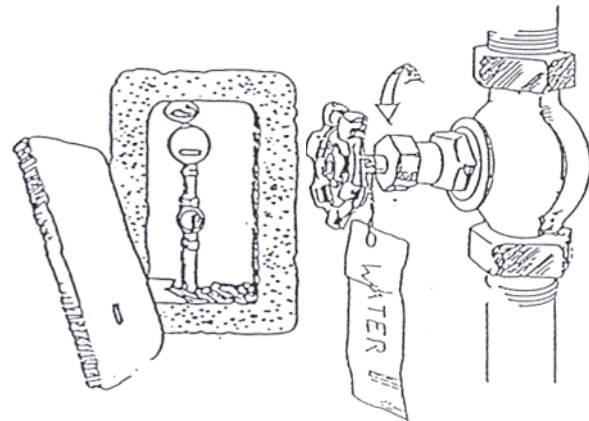
## How to shut off water in and emergency

► Prevent flooding/ water damage by turning off your water. If water pipes break within your home and/or there is flooding, turn off the water. Water may be turned off at either of two locations:

► At the main meter, which controls the water flow to the entire property

**OR**

► recommend that you shut off your water here because it may flow out of the water heater and back into the main line if you do not. Label the water main for quick identification:



Attach a valve wrench to the water line.(This tool can be purchased at most hardware stores.) and turn clockwise.

